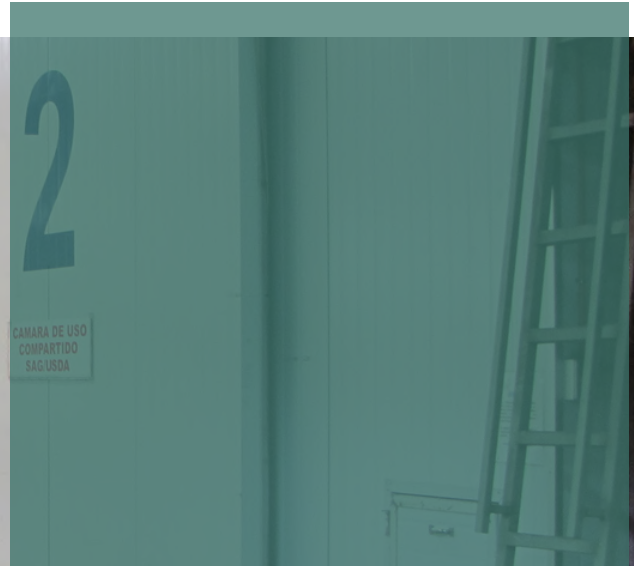


Cell manager

Strong by means of overview



The Cell Manager offers a large number of energy-saving innovations. Sustainable innovations, devised by and for all existing and future Sercom end users. Clarity and overview have been given high priority in the design of this new programme.

The Energy Manager can now be used to control purchased power. There are also options for external intervention at a strategic level. Unique status/cause notifications in combination with multiple choice settings give you more insight.

Being able to use the outside air more optimally for heating and cooling, the integrated and optimised solar heat control and the process-dependent use of fans that can be controlled at a much more detailed level, help you reduce your energy bill.

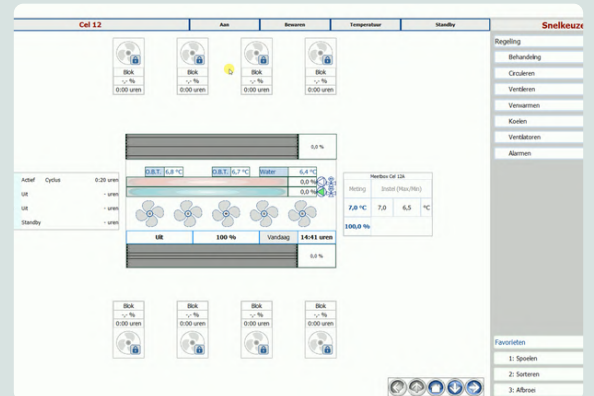
In brief:

- Controlling via purchased assets
- Warmth return from cooling central
- Warmth from sun control
- All cooling resources possible
- Optimal use of outside air
- Combination of agriculture and bulb possible
- Extra clarity through overview
- Strong by means of overview



More insight into your ventilation, circulation and cooling processes, and the greater number of options for setting alarm limits on various sensors present, help you to improve the storage quality of both your arable and flower bulb products.

Compressors and condensers can be controlled in steps or gradually together with compressor levelling control, the priority control, the intelligent control and the possibility of warmth recovery from the cooling centrals, leading to the reduction of cooling costs.



SERCOM