

SercoVision options

Get more out of your automation



With the operating and registration programme SercoVision, you obtain large quantities of data. To get more information from this software, there are several different options available. They increase your insight into the vital business processes and allow you to optimise the settings further.

Practical dashboard

To operate SercoVision, SERCOM developed the dashboard option SercoView. With SercoView you can adjust the control as precisely as you want it, using your own photos and diagrams. This makes the control even easier and clearer.

Comparison with colleagues

By examining and comparing 'live' various measurements from participants in your study group, you can work with your colleagues to raise your company to a higher level. With the SercoVision LetsGrow.com option, you can simply and clearly place

In brief:

- Greater overview
- Better understanding of connections
- Runs under Windows
- Very precise control
- Security possible
- Easy to operate
- Handy guide

Available options:

- SercoNet
- SercoView
- SercoCSV
- SMS alarm
- Touchscreen
- Graphics
- High resolution graphics
- Periodic overviews
- LetsGrow.com
- Extensive measurement summary
- Ozon link

data from different process computer systems next to each other.

Clear graphs

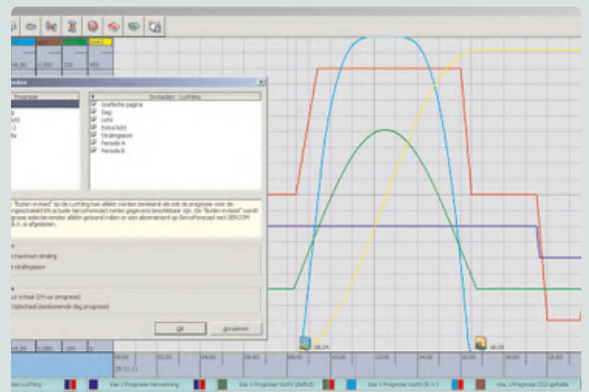
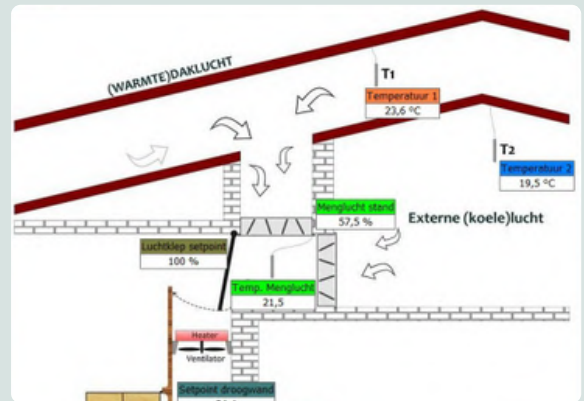
With the 'Graph registration' option, you obtain a clear image of the running processes in your company. You can call up historical data to study an unlimited number of relationships over any period. The graphs are accompanied by handy legends. The software offers the possibility to zoom in, compare different periods and use multiple time scales.

You can choose to expand the graph programme with the 'High resolution' option, which produces even more detailed images of the measurements and the settings.

Periodic overviews

With the 'Periodic overviews' option, you can call up the recorded data in a uniform manner and can easily subject the graphs to various arithmetic operations to obtain more insight into, for example:

- Min. value of the day
- Max. value of the night
- Average value over 24 hours
- Cumulative radiation sum



SERCOM