

SercoVision 6 - What's new?

Additions to previous versions



SercoVision is the operating programme of SERCOM. It is used to operate the Sercom process computer and to monitor the situation of each functionality via a PC.

By implementing improvements and integrating wishes from the growers, this program is continuously expanded with various possibilities and options. This simplifies making the correct settings even more accurately. In addition, SERCOM is constantly working on tackling important issues seriously. Think of the possibilities to reduce the use of energy, water and fertilisers. This results in significant cost savings for your greenhouses and storage cells.

Combining settings or transferring data from one functionality to another is also examined. The data obtained can therefore easily be used or displayed in multiple overviews.

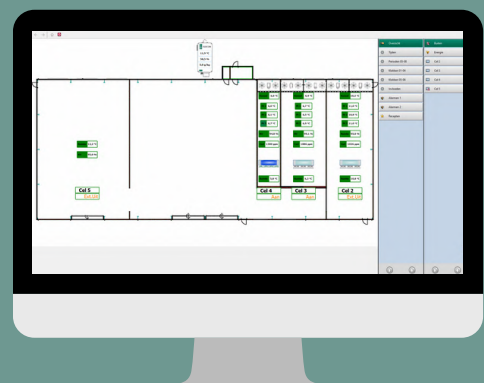
The most recent development of SercoVision is version 6. Compared to the previous versions, various additions have been made.

Additions within SercoVision 6

- Communication over TCP/IP
- Option *Recipes*

In brief:

- Operating programme Sercom process computers
- Settings
- New functionalities
- Build your own dashboard
- SercoView
- Graphs



- SercoVision 6 supports version V26 (the software version on the process computer). Upgrading to version 26 creates an automatic conversion from previous *recipes*
- Mouse wheel functionality in the Measure & Setup window
- Shortcuts to web pages are easy to open
- Automatically log out within SercoVision

SercoView

SercoView is a software option within SercoVision. This allows you to make a simple overview of all settings and the resulting values. With this option you can set up your dashboard completely according to your own wishes.

Also useful is the ability to place your own images in the dashboard. You drag the measurements onto the image and design your custom dashboard. This increases your insight and makes making the right decision a lot easier.

A number of important additions and improvements have also been made within SercoView for SercoVision 6:

- Activating recipes from SercoView
- Easy display of graphs in SercoView overview
- SercoView pages can be sorted in the navigation list
- Manuals can be opened directly in SercoView
- Possibility to open graphs from SercoView
- Built-in option Infographics can also respond to the collected statuses
- Standard SerControl navigation is now integrated with SercoView
- Actions can be linked to objects

Graphs

The *Graphs* or *Increased Resolution Graphs* option (also called *Fast Graphs*) is also a software option in earlier versions of SercoVision. In SercoVision 6 the following functionalities have been implemented within this option:

- Easier to cycle through Graph Sets with shortcuts
- Scale of the Graphics settings can be saved
- Graphs can be activated within SercoVision 6

